

# ***Polar Star*** Expedition Cruise Ship



Originally named the Njord, the Polar Star was built as an icebreaker and meticulously operated and maintained by the Swedish Maritime Authority. In 2001, she underwent a complete conversion into an Arctic and Antarctic expedition cruise ship. The vessel is classed with DNV as a SOLAS compliant passengership with an Ice Class of 1A\*. The Polar Star is large enough to voyage to remote areas in comfort and small enough to enter out of the way destinations.

The vessel can carry 105 passengers, with 47 exterior cabins onboard. She has a separate panoramic lounge as well as passenger restaurant. All cabins have their own bathrooms, closets, writing desks, and chairs. MV Polar Star is also equipped with a lecture hall, a small gym, a library, and a bar.

Year of Build	1969	Year of Conversion	2001
Length Overall:	86.5 m	GRT (ITC 69):	4,998
Length BP	79.49 m	NRT (ITC 69):	1,500
Breadth Max:	21.21 m	DWT:	879
Depth:	9.5 m	Draught:	6.55 m
Maximum Compliment	155	Total Passengers	105



## Main Machinery

The Polar Star has twin screw diesel electric propulsion. The propulsion system is DC/DC with two dedicated diesel generators. Economical operation is provided with one diesel generator powering two propellers, providing an average speed of over 11 knots, while with two generators running, the vessel can obtain speeds over 14 knots.

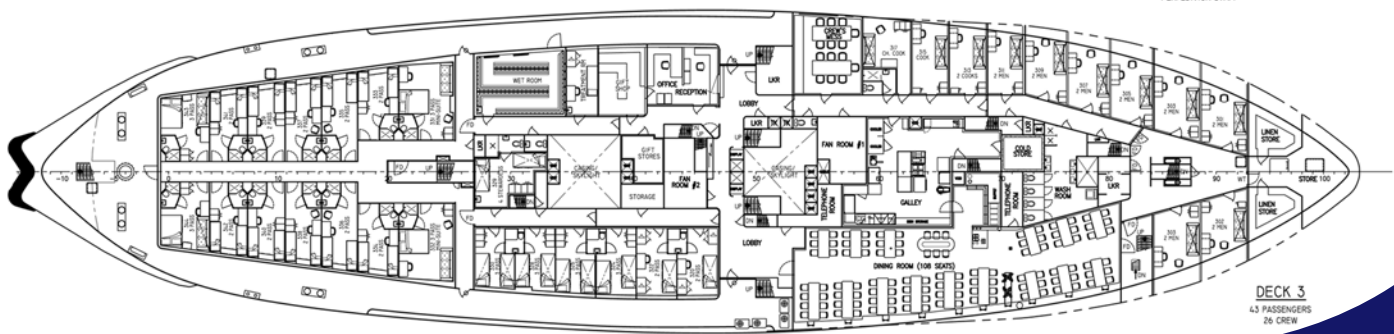
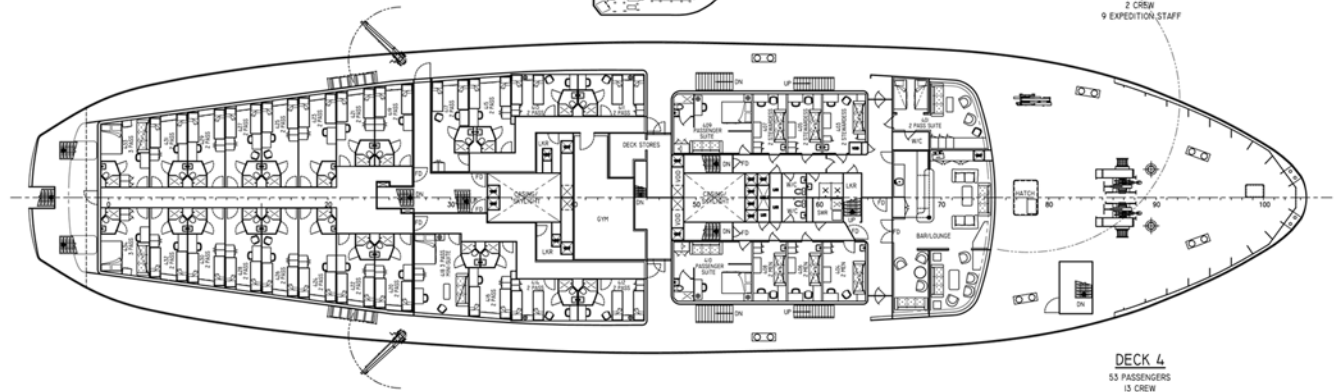
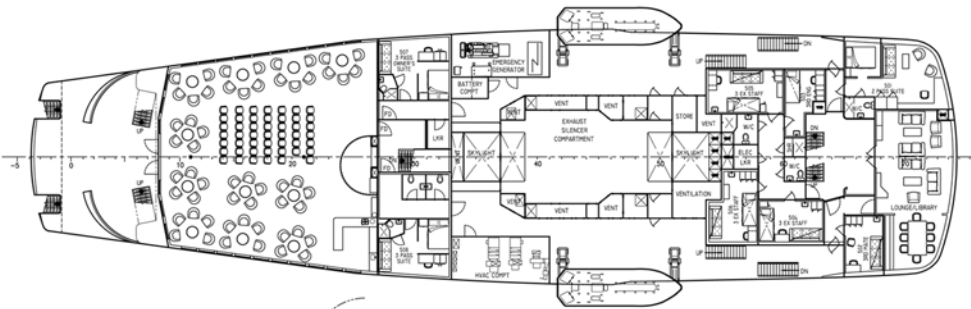
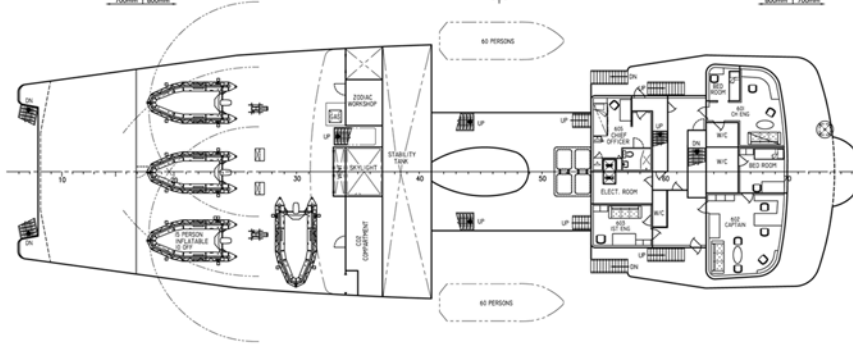
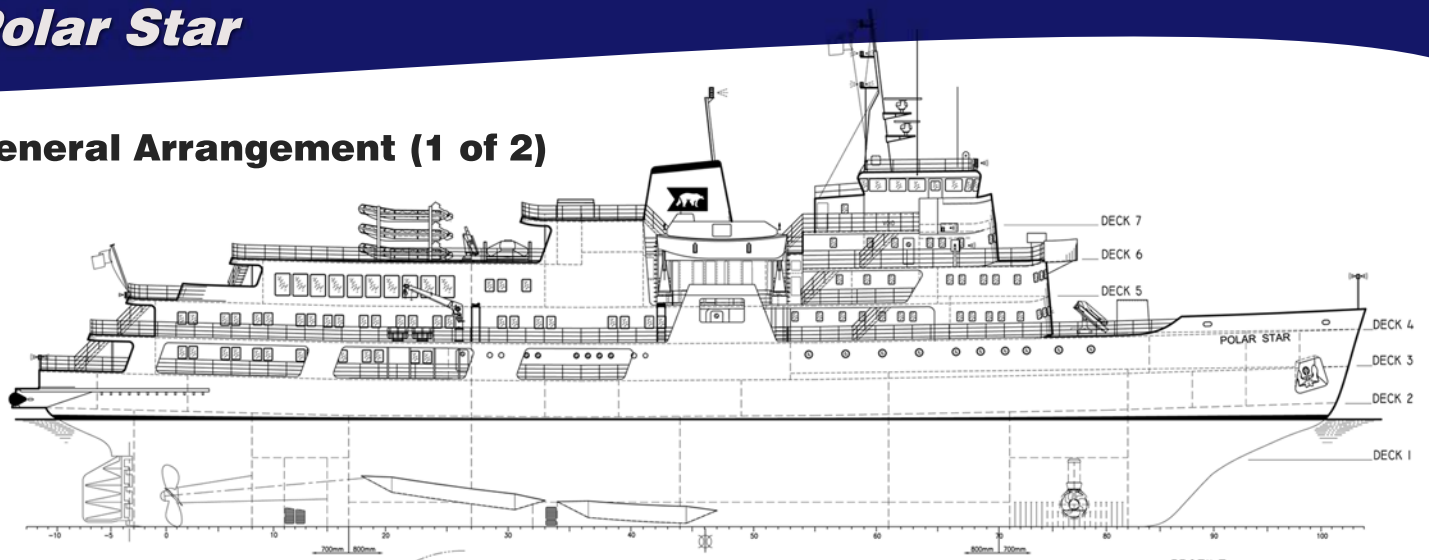
The vessel has four ship service generators providing power at 440V/220V/110VAC at 60 hertz. During normal operations, the vessel uses two or the four generators. Electrical power throughout the vessel is 220VAC with additional 110VAC in passenger cabins.

Item	# off	Model	Description	Make
Propulsion Diesel Engines	2	9MH51	2580kW @ 330 RPM	Wärtsila (Sultzer) NSD Switzerland Ltd.
Propulsion Generators	2	GTOUL 155/355	2x1200kW, 400 VDC	Stromberg (ABB)
Propulsion Motors	2	GTOUL 180/656	2x1700kW, 150 RPM	Stromberg (ABB)
Main SS generator diesel engine	4	614T	455 kVA, 600 RPM	Wärtsila NSD Switzerland Ltd.
Emergency generator diesel engine	1	3406	250 Kw	Caterpillar
Auxiliary boilers	2		2.4 m3	Wartsilla
Bow thruster	1	TT 1650 AUX FP	680 kW	Rolls-Royce Marine AS - Propulsion Ulsteinvik
Propellers	2	4 Blade Fixed Pitch - Steel	4200mm Dia	Wartsila

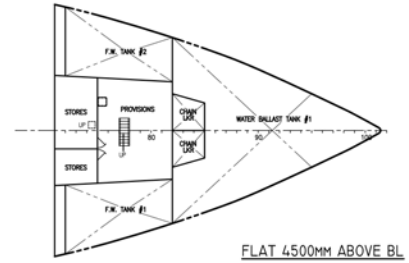
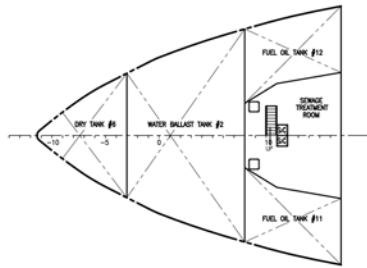
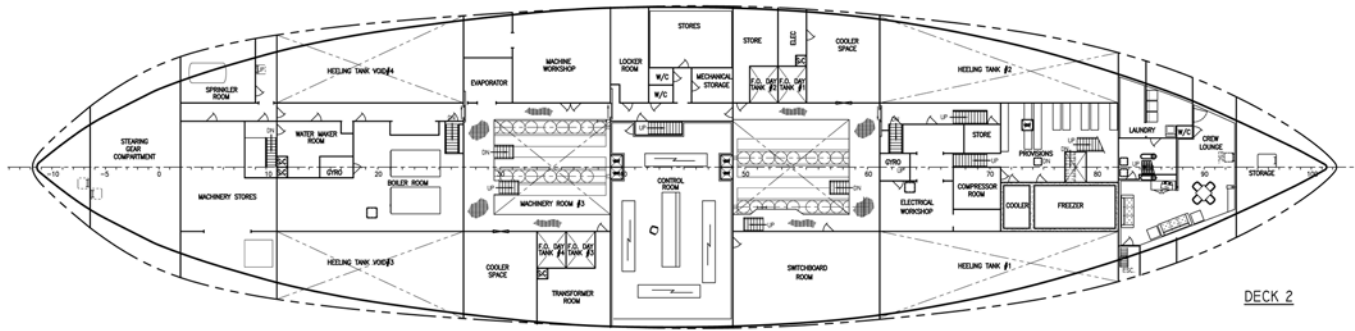
## Consumptions

Fuel Oil	14 m3/Day
Potable Water	15-19 m3/Day

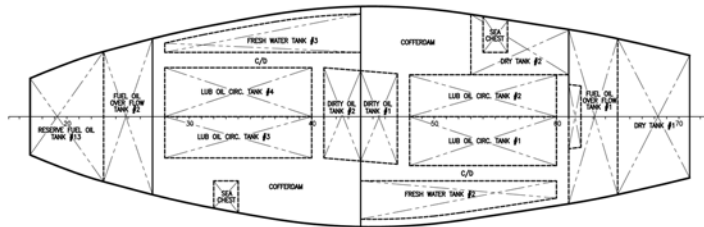
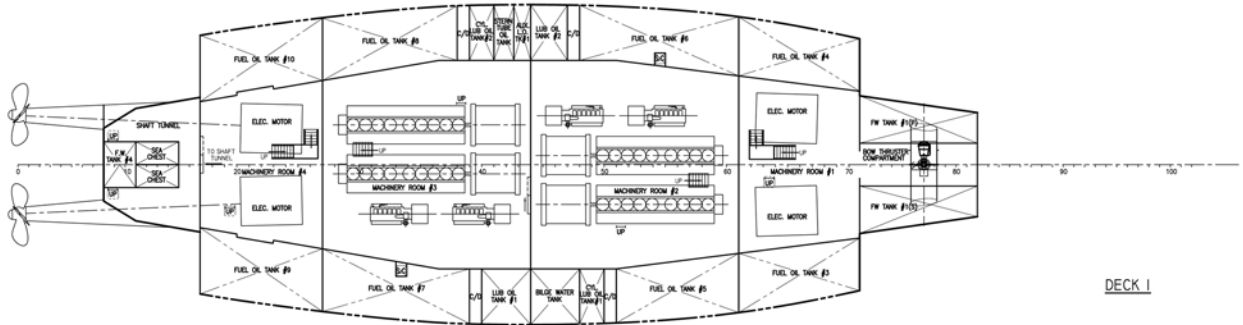
## General Arrangement (1 of 2)

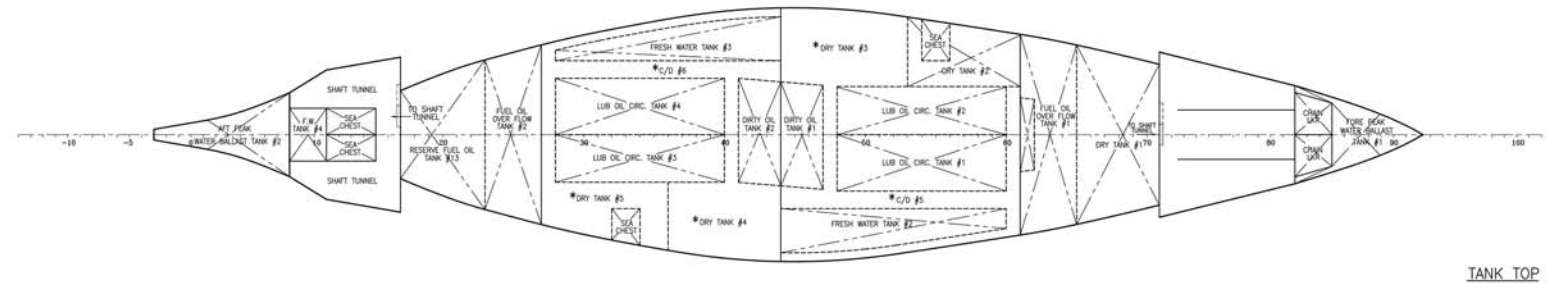
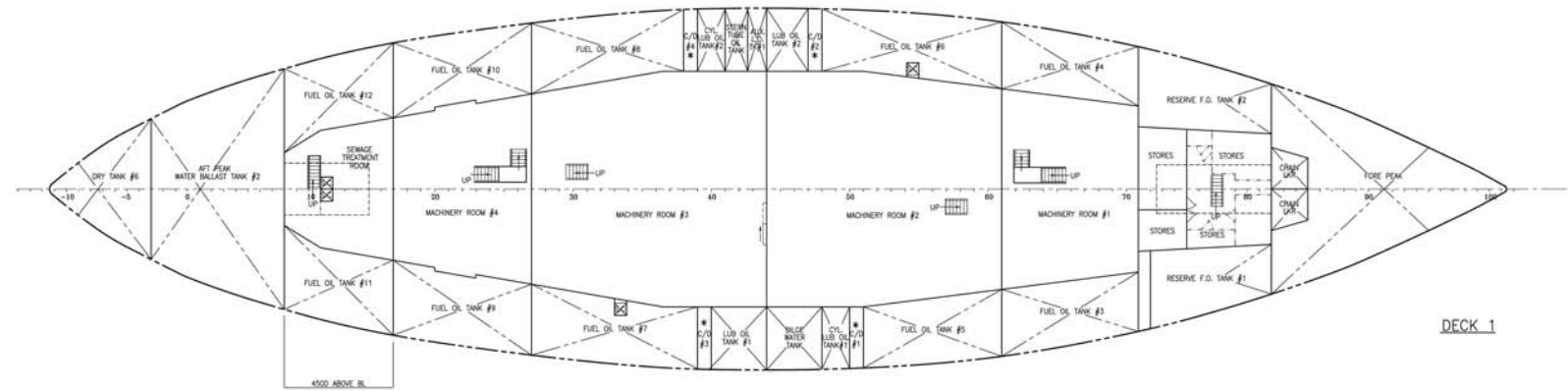
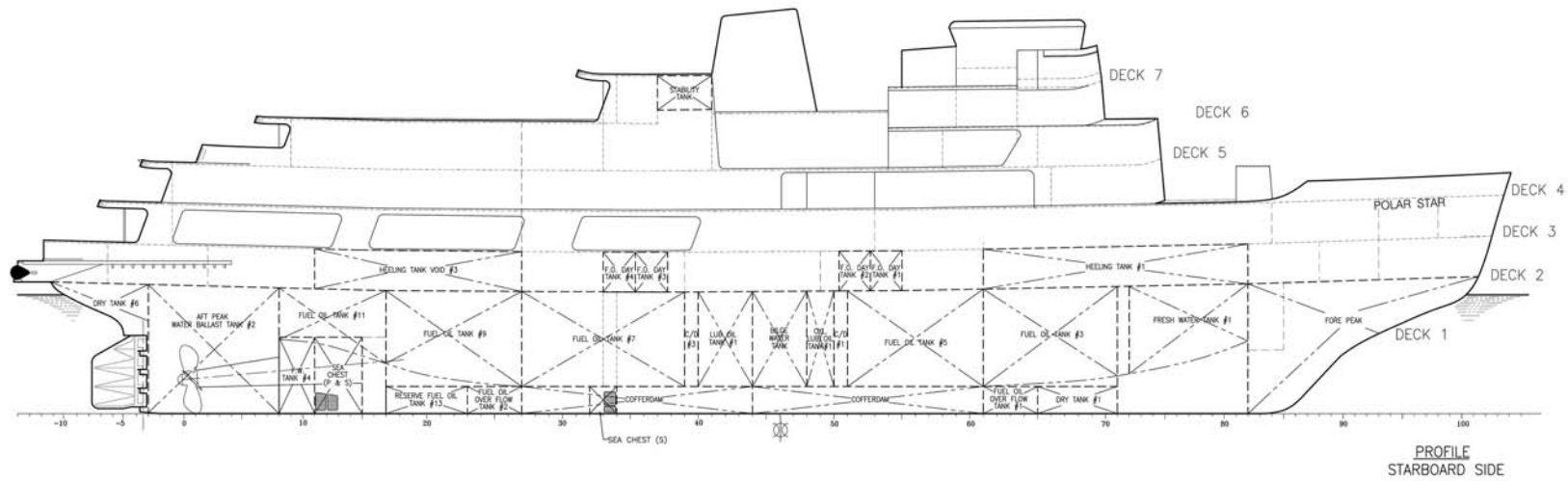


## General Arrangement (2 of 2)



FLAT 4500MM ABOVE BL





\* NOTE: COFFERDAMS #1, #2, #5 AND DRY TANK #3 ARE CONNECTED TO EACH OTHER.  
COFFERDAMS #3, #4, #6 AND DRY TANKS #4 & #5 ARE CONNECTED TO EACH OTHER.

## Tank Capacities

Tank	Capacity (m3)
Fuel Oil (MDO)	1175
Fresh Water	261
Water Ballast	859
Lube oil	350
Void	809
Forepeak	200

## Cabin Details (1 of 2)

### K1 – TRIPLE/DOUBLE CABINS



Two lower and one upper berths. Sharing toilet, shower and washbasin with next cabin. Approx 100 sq. feet/10 sq. metres. Portholes. May be sold as a triple or double share (no single supplement).

Cabin Numbers:  
322, 324, 326, 328, 330

### K2 – DOUBLE CABINS



Two lower beds. Private bathroom with shower, toilet and washbasin. Approx 115 sq. feet/11.5 square metres. Large windows. K2 cabins on deck 3 have a partially obstructed view and one window opens. K2 cabins on deck 4 have non opening windows. May be sold as a double or single (with payment of single supplement).

Cabin Numbers: 335, 336, 337, 338, 411, 412, 413, 414, 415, 416, 417, 419, 420, 421, 422.

### K3 – DOUBLE CABINS



Two lower beds. Private bathroom with shower, toilet and washbasin. Approx 115 sq. feet/11.5 square metres. Large windows, one opens. May be sold as a double or single (with payment of single supplement).

Cabin Numbers: 333, 334, 339, 340, 341, 342, 423, 424, 425, 426, 427, 428, 429, 430, 431, 432.

## Cabin Details (2 of 2)

### K4 – SUPERIOR CABINS



Double bed and couch which can be made up as a bed. Private bathroom with shower, toilet washbasin. Approx. 140 sq. feet/14 sq. metres. Side and aft facing windows, one opens. May be sold as a double, triple or single (with payment of single supplement).

Cabin Numbers: 343, 344, 433, 434.

### K6 – MINI SUITES



Double bed (some in alcove) and couch which can be made up as a bed in some. Private bathroom with shower, toilet washbasin. Approx. 180 sq. feet/18 sq. metres. Large windows, some with one opening. May be sold as a double, triple or single (with payment of single supplement).

Cabin Numbers: 331, 332, 409, 410, 418, 507, 508.

### K7 – SUITES



Sleeping area in separate room (double bed in 501, 2 singles in 401 – can convert to double). Private bathroom with shower, toilet washbasin. Approx. 250 sq. feet/25 sq. metres. Forward and side facing windows, some open. May be sold as a double or triple.

Cabin Numbers: 401, 501.

## Amenities

### DINING ROOM

Located on deck 3, our dining room is equipped to seat all our passengers at one time and has an informal setting.



### BAR

The cozy Polar Bar can be found on deck 4 forward.



### GYM

For those extra energetic passengers, the ship has a gym on deck 4, equipped with a treadmill, bicycles, rowing machine, weight machine, mat, exercise ball and towels.



### ONBOARD SHOP

Located on deck 3 next to reception, the shop is stocked with a variety of souvenirs, including clothing, postcards and jewellery and a selection of basic personal items to help you through the trip.



### OBSERVATION LOUNGE

The observation lounge is the perfect place to unwind in between activities. Here the passengers can enjoy a pre-dinner drink, meet with new friends, play cards or simply enjoy the views from our large, panoramic windows. The observation lounge is also the epicenter of onboard activities, the location for daily recaps, lectures, briefings, film screenings and other events. There is a 24-hour self-serve refreshment station which includes coffee and tea.



### LIBRARY

Sometimes it is nice to have some quiet time to soak up the experiences of the day or curl up with a good book. The charming library provides just that opportunity. The library is located on deck 5 and is stocked with board games for leisure hours at sea, reference materials, novels and paperbacks.

### TREATMENT ROOM

The treatment room is located on deck 3 and is equipped with basic medications and medical equipment.

### WET ROOM

On deck 3, the wet room provides a place to dry and store lifejackets, boots and jackets when you return from your landing ashore. It is located next to the gangway where Zodiacs are loaded and unloaded.



## Recent Works

### 2009

- New Radar Installation
- New Gyro Compass Installation
- Realignment of Main Engines

### 2010

- Completion of Class renewal survey
- Docking Spring 2010
- Hull thickness gauging

### 2011

- Tailshaft Surveys
- Renew shaft seals
- Blasting and coating of Aftpeak Waterballast Tank
- Blasting and coating of FW Tank #2
- Installation of Sonar
- Overhaul of Diesel Engine #4
- Bottom repair due to grounding

